

Installation instructions for Haiti garden firepit

The set comprises:

- fire bowl
- 3 legs for the firepit
- 6 screws M8x20

Tools required for assembly:

- ring or socket spanner 13

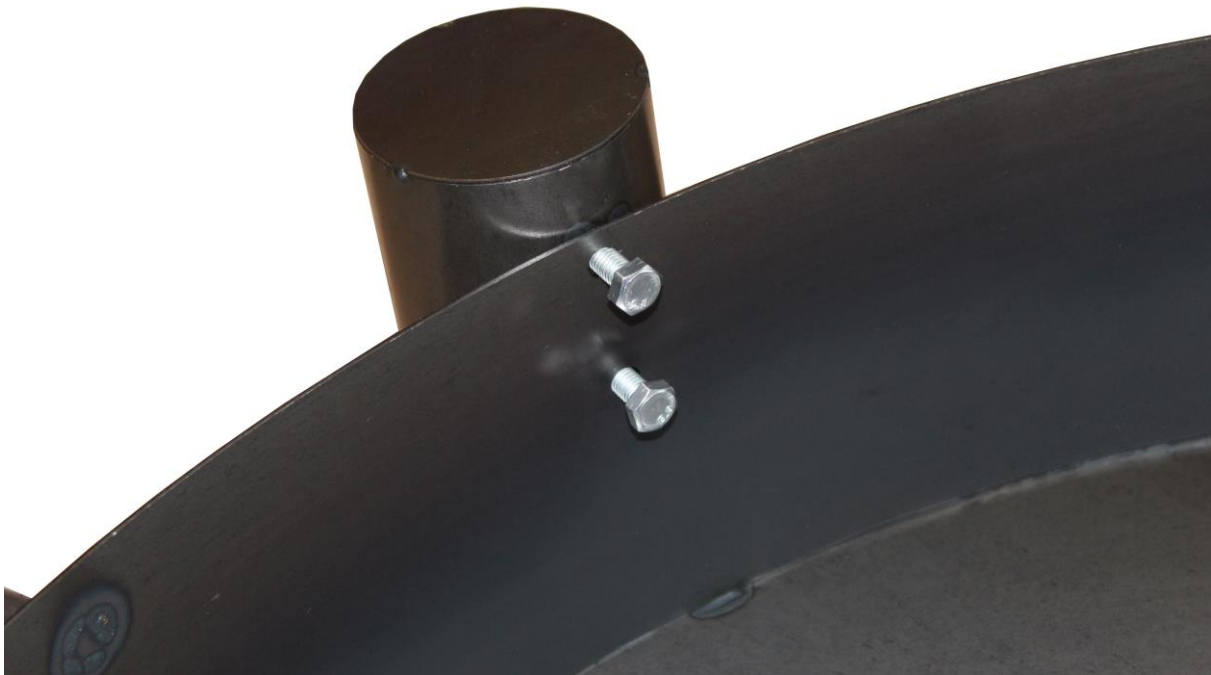
IMPORTANT! Before proceeding with the installation, check the contents of the parcel and ensure that all of the aforementioned items required for installation are included. It is important to prepare the necessary tools required to complete the fireplace assembly process. Each leg has 2 drilled holes. The fire bowl has 6 punched holes for attaching the 3 legs.

Picture of contents.



Step 1.

Prepare the first of the 3 legs and the 2 mounting screws. Lift the fire bowl on one side and place the leg over the holes drilled in the fire bowl. Use one of the screws to start screwing the fire bowl to the leg. There is no need to screw in the screw stage all the way. When you have the leg attached with one of the screws, start screwing the other screw through the hole in the fire bowl to stabilise the leg attachment. There is no need to tighten the screws all the way at this stage.



Step 2.

To mount a second leg repeat all steps as for the assembly of the first leg.

Step 3.

To mount a third leg follow the same steps as before.

Step 4.

When all 3 legs are pre-screwed with the 6 screws from the kit you can screw everything together rigidly. In this step it is necessary to use a 13 spanner to tighten all 6 screws firmly to achieve the desired rigidity and stability of the firepit.

IMPORTANT ! Use all 6 screws to give the firepit the required stability.

The assembled and finished firepit should look like the picture below.

